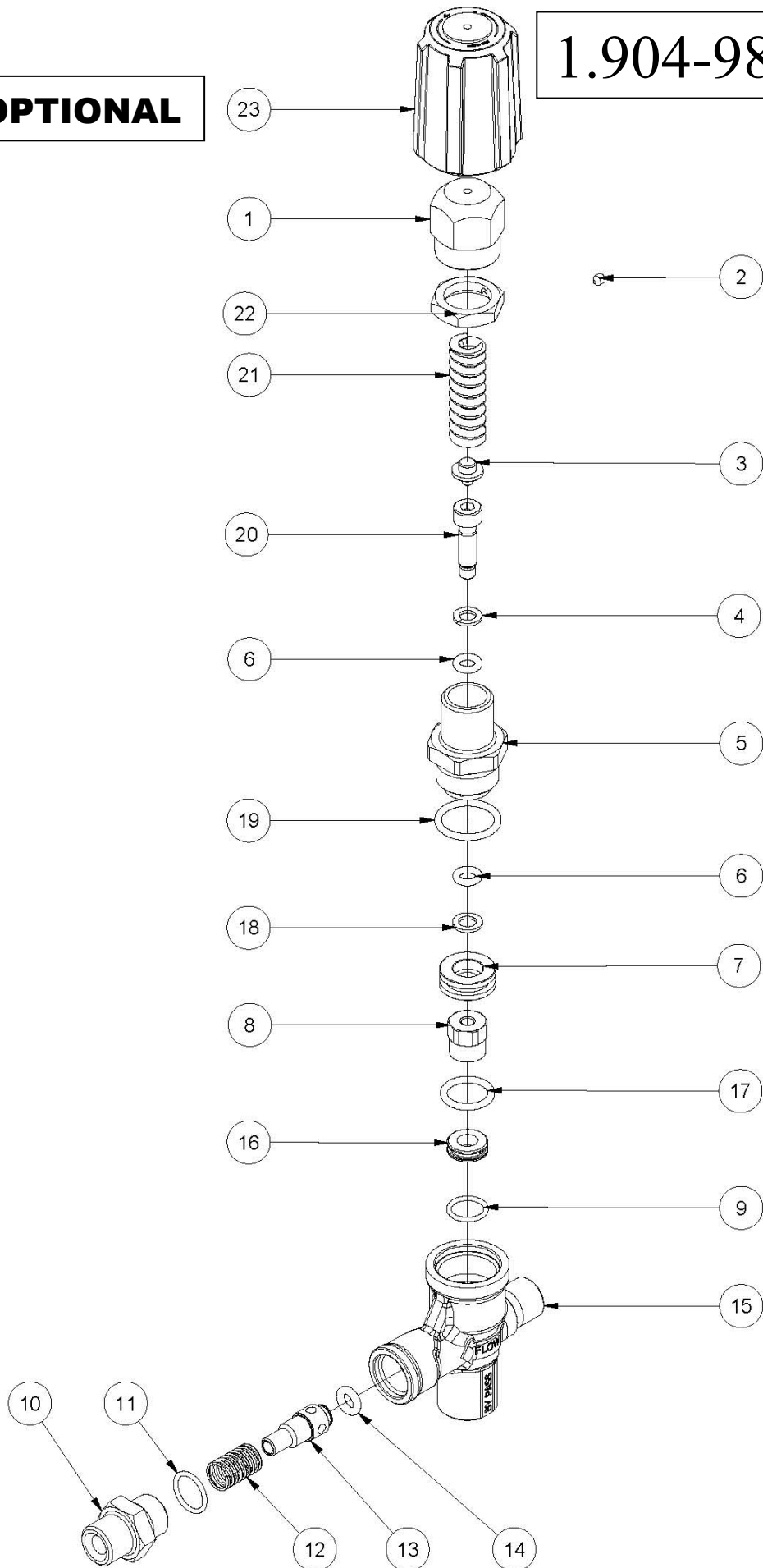


1.904-987.0 NVBC

OPTIONAL



PARTS LIST LISTA PARTI

Item Pos	Part Number Codice	Description	Descrizione	KIT	Q.TY Q.TA
1	9.853-952.0	BRASS HANDLE	MANOPOLA_VBC_L=29		1
2	9.851-522.0	SET SCREW	VITE STEI M4x4		1
3	9.851-064.0	VALVE PALTE	PIATTELLO MOLLA VBA	C	1
4*	9.850-270.0	TEFLON BACK RING Ø6.5x11	ANELLO ANTIESTR. Ø11x6,5x1,2	A	1
5	9.851-169.0	CONNECTOR, STEM GUIDE	RACCORDO DI GUIDA VBA		1
6*	9.850-709.0	OR 3024 Ø2.62x6.02	O-RING 3024 - Ø2,62x6,02 90Sh	A-C-G	1
7*	9.850-326.0	GUIDE BUSHING	BOCCOLA (VBH)		1
8*	1.099-729.0	BALL SUB-ASSY	PREM. SFERA (VBA)	C	2
9*	9.850-691.0	O-RING 2050 - Ø15.98x12.42	O-RING 2050 - Ø1,78x12,42 NBR 70	A-C	1
10*	9.851-168.0	OUTLET CONNECTOR	RACCORDO USCITA (VBS)		1
11*	9.850-686.0	O-RING 3068 - Ø2.62x17.13	O-RING 2056 - Ø1,78x14 NBR 90	A-B	1
12*	9.850-873.0	POPPET SPRING	MOLLA VAM 08 (D-ST-MT-LT)	B	1
13*	9.850-957.0	POPPET	OTTURATORE OTTONE	B	1
14*	9.850-722.0	O-RING Ø3x6 90SH	O-RING Ø3x6 90SH	A-B	1
15*	9.853-953.0	VALVE BODY 3/8M IN - 3/8F OUT	CORPO VALVOLA NVBC 3/8M IN - 3/8F OUT		1
16*	9.851-973.0	VALVE SEAT	SEDE VALVOLA (TMP)	C	1
17	9.850-699.0	O-RING Ø2,62x15,54 NBR 70	O-RING Ø2,62x15,54 NBR 70		1
18*	9.850-271.0	TEFLON BACK RING Ø7x11.5	ANELLO ANTIESTR. Ø11,5x7x1,2	A	1
19*	9.850-705.0	OR 3081 Ø2.62x20.24 NBR 90	O-RING 3081 - Ø 2,62x20,24 NBR 90	A	1
20*	9.853-984.0	STEM	PISTONE VALVOLA NVBC/NVBH		1
21*	9.850-880.0	VALVE SPRING	MOLLA (VBA)	C	1
22*	9.850-562.0	OUTLET PIPING 3/8"	DADO M20		1
23	9.850-900.0	PLASTIC HANDLE	MANOPOLA PLASTICA ROSSA VBA		1

IMPORTANT

IMPORTANTE

* Part available ONLY in kit
Disponibile SOLO in kit

(...) Parts pre-assembled
Parti pre-assemblate

ORDINARY MAINTENANCE KIT / KIT MANUTENZIONE ORDINARIA

KIT	Item Pos.	Part Number Codice	Description	Descrizione	Q.TY Q.TA
A	4 - 6 - 9 - 11 - 14 - 18 - 19	1.904-989.0	O-RING / BACK RING KIT	KIT O-RING / ANTIESTRUSORI	1
B	11 - 12 - 13 - 14	1.904-990.0	OUTLET POPPET KIT	KIT OTTURATORE	1
C	3 - 8 - 9 - 16 - 20 - 21	1.905-044.0	STEM KIT	KIT PISTONE	1

"Q.TY" => Necessary quantity to repair one valve
"Q.TA" => Quantità necessaria per riparare una valve