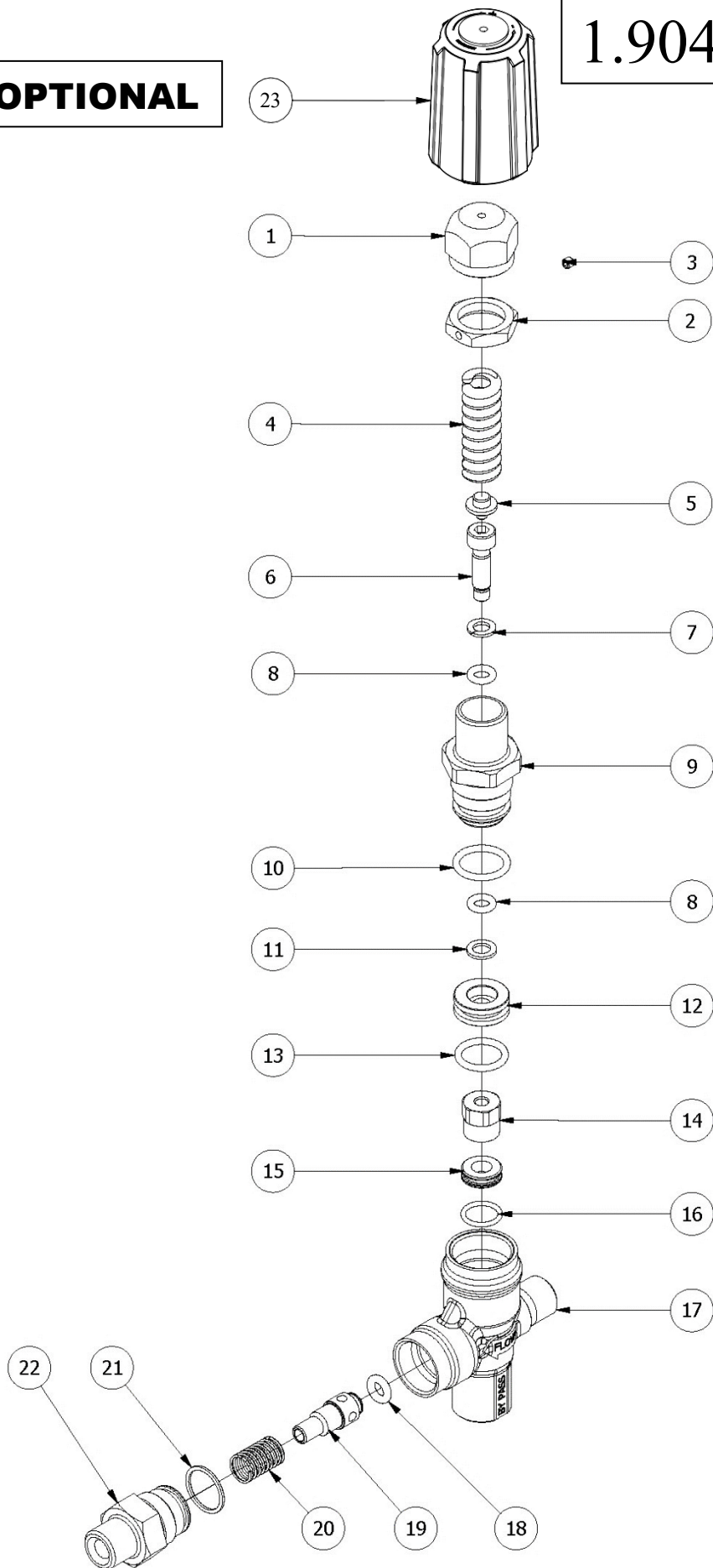


1.904-988.0 NVBH

**OPTIONAL**



## PARTS LIST LISTA PARTI

Item Pos	Part Number Codice	Description	Descrizione	KIT	Q.TY Q.TA
1	9.853-955.0	BRASS HANDLE	MANOPOLA NVBH_L=20		1
2	9.850-562.0	NUT	DADO M20		1
3	9.851-522.0	SET SCREW	VITE STEI M4x4 ISO4027		1
4*	9.853-985.0	SPRING	MOLLA (NVBH)	C	1
5*	9.851-064.0	PLATE	PIATTELLO MOLLA VBA	C	1
6*	9.853-984.0	STEM	PISTONE VALVOLA NVBC / NVBH	C	1
7*	9.853-983.0	STEM TEFLON RING	ANELLO ANTIESTR. Ø11x6,5x1,2	A	1
8*	9.850-709.0	STEM O-RING	O-RING 3024 - Ø2,62x6,02 90Sh	A-C	2
9*	9.853-954.0	GUIDE CONNECTOR	RACCORDO DI GUIDA MOLLA VBH	C	1
10*	9.850-677.0	GUIDE CONNCTOR O-RING	O-RING 3068 - Ø2,62x17,13 NBR90	A	1
11*	9.850-271.0	GUIDE BUSHING TEFLON RING	ANELLO ANTIESTR. Ø11,5x7x1,2	A-B	1
12*	9.850-326.0	GUIDE BUSHING	BOCCOLA (VBH)	B	1
13*	9.850-699.0	GUIDE BUSHING O-RING	O-RING 3062 - Ø2,62x15,54 NBR 70	A-B	1
14*	1.099-729.0	BALL SUB-ASSEMBLY	PREM. SFERA (VBA)	B-C	1
15*	9.851-973.0	SEAT	SEDE VALVOLA (TMP)	C	1
16*	9.850-691.0	SEAT O-RING	O-RING 2050 - Ø1,78x12,42 NBR 70	A-C	1
17	9.853-957.0	NVBH VALVE BODY 3/8M - 3/8F	CORPO NVBH 3/8M IN - 3/8F OUT		1
18*	9.850-722.0	POPPET O-RING	O-RING Ø3x6 90SH	A-B	1
19*	9.850-957.0	POPPET	OTTURATORE OTTONE	B	1
20*	9.850-873.0	SPRING	MOLLA VAM 08 (D-ST-MT-LT)	A-B-C	1
21*	9.850-690.0	OUTLET CONNECTOR O-RING	O-RING 2068 - Ø1,78x17,17 NBR 70	B-C	1
22	9.850-562.0	OUTLET CONNECTOR	RACCORDO USCITA NVBH 3/8M		1
23	9.850-900.0	PLASTIC HANDLE	MANOPOLA PLASTICA ROSSA VBA		1

### IMPORTANT

### IMPORTANTE

\* Part available ONLY in kit  
Disponibile SOLO in kit

(...) Parts pre-assembled  
Parti pre-assemblate

## ORDINARY MAINTENANCE KIT / KIT MANUTENZIONE ORDINARIA

KIT	Item Pos.	Part Number Codice	Description	Descrizione	Q.TY Q.TA
A	7 - 8 - 10 - 11 - 13 - 16 - 18 - 21	1.904-991.0	O-RING / BACK RING KIT	KIT O-RING / ANTIESTRUSORI	1
B	18 - 19 - 20 - 21	1.904-992.0	OUTLET POPPET KIT	KIT OTTURATORE	1
C	4 - 5 - 6 - 14 - 15 - 16	1.905-045.0	STEM KIT	KIT PISTONE	1

“Q.TY” => Necessary quantity to repair one valve  
“Q.TA” => Quantità necessaria per riparare una valve