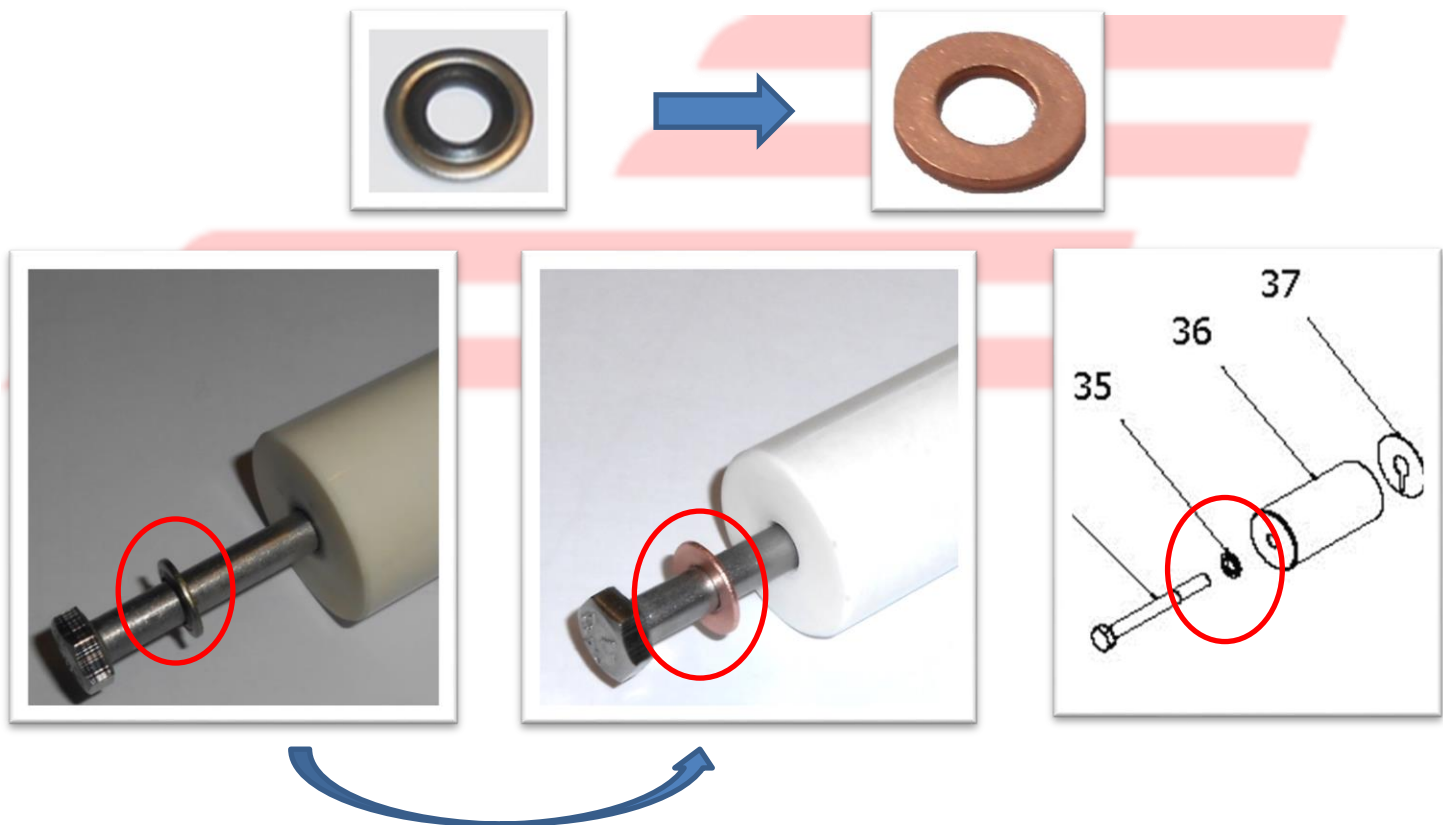


## TECHNICAL BULLETIN 007 March 2014

### Copper Washer p.n. 140010

*Previous bonded seals part no. 140813 has been replaced with new copper washer part no. 140010 in all pumps up to 300 bar (4350 PSI) operating pressure in order to improve compatibility whit aggressive fluids.*

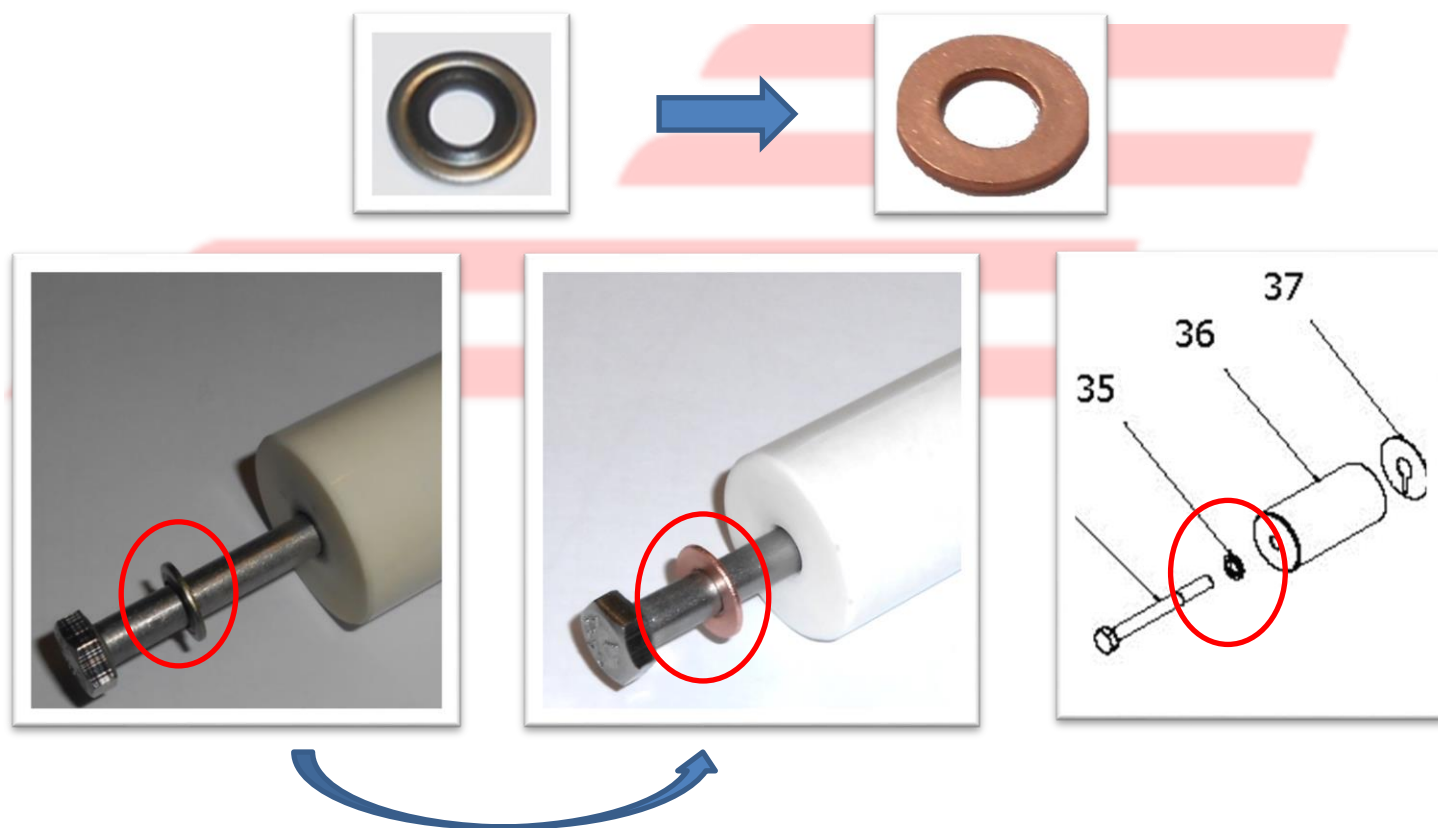


*Current and previous bonded seals are fully interchangeable.  
During maintenance operations, if abnormal wear on previous version is present, replace it with new copper washer.*

## TECHNICAL BULLETIN 007 Marzo 2014

### Rosetta rame p.n. 140010

E' stata sostituita la tenuta vite pistone su tutti i modelli, fino a 300 bar (4350 PSI), dove era presente la bonded seals part no. 140813, con la rosetta di rame part no. 140010. Questo per migliorare la compatibilità con i liquidi aggressivi.



I particolari sono intercambiabili con la versione precedente.  
In fase di manutenzione, qualora si verificasse una usura anomala del componente installato, si consiglia di sostituirlo con la nuova versione.