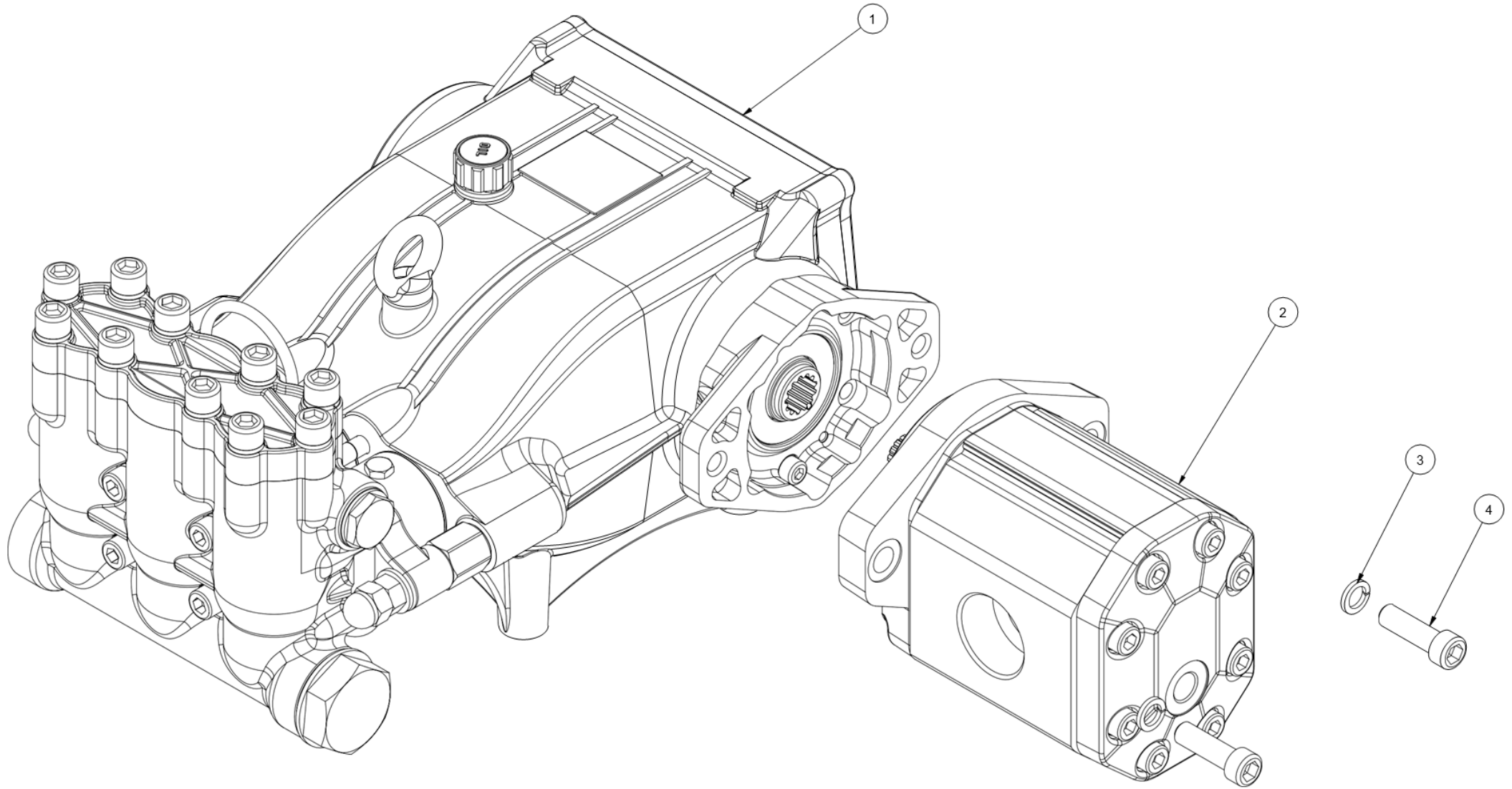
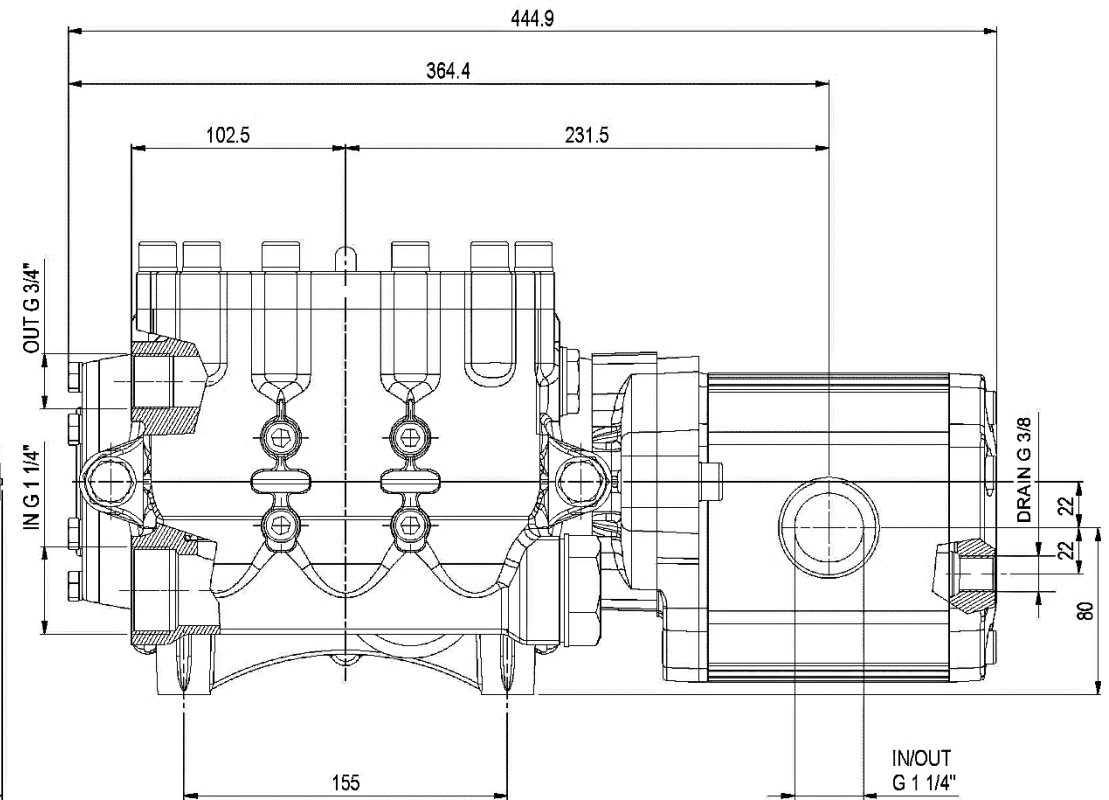
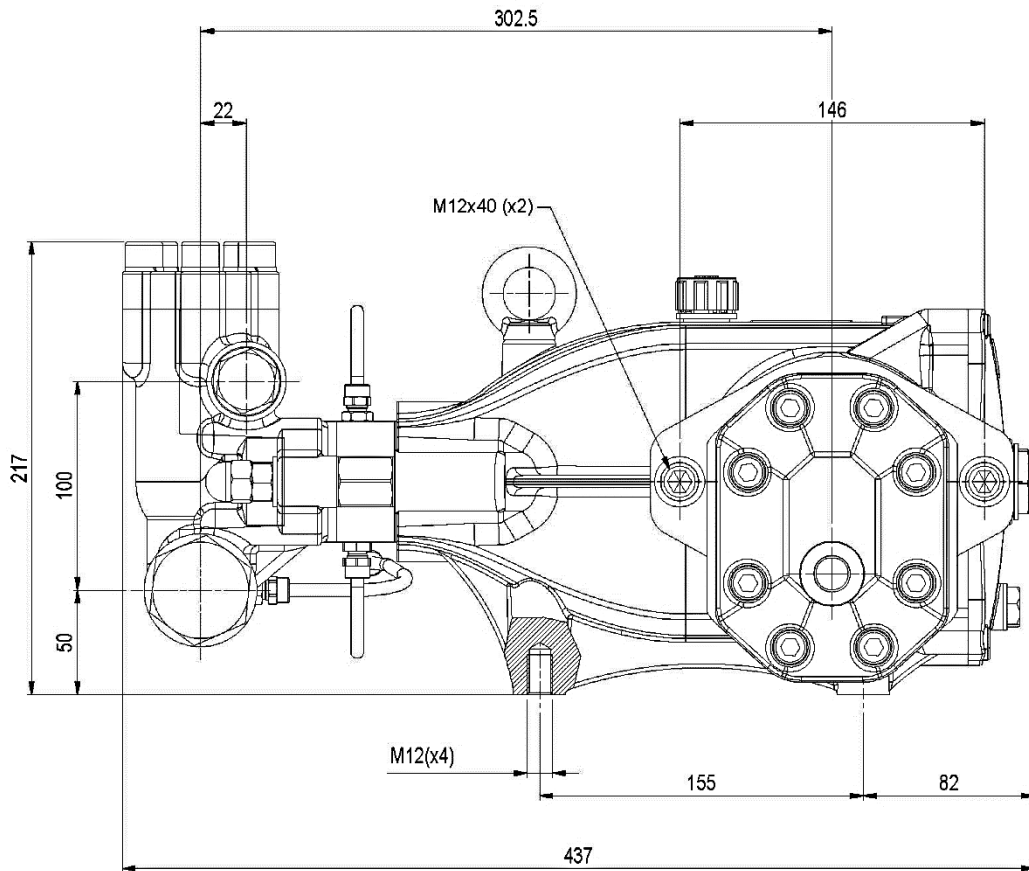


MXT HYDRAULIC MOTORPUMP WITH GEAR MOTOR

MOTOPOMPA IDRAULICA MXT CON MOTORE A INGRANAGGI



OVERALL DIMENSIONS - DIMENSIONI DI INGOMBRO



PART LIST

LISTA PARTI

| Pos.Item | Codice Part Number | Descrizione | Description | Q.tà Q.ty |
|----------|--------------------|--|--|-----------|
| | 1.904-900.0 | POMPA MXT 70L 200BAR 1450RPM HY DX + MOT.GHM3A-110 | POMPA MXT 70L 200BAR 1450RPM HY DX + MOT.GHM3A-110 | |
| 1 | 1.904-786.0 | <i>Pompa MXT 70L 200BAR 1450RPM HY DX</i> | Pump MXT 70L 200BAR 1450RPM HY RIGHT | 1 |
| 2 | 9.853-811.0 | <i>Motore idraulico GHM3A-110</i> | Hydraulic motor GHM3A-110 | 1 |
| 3 | 9.851-159.0 | <i>Rosetta elastica M12 DIN7980</i> | Washer M12 DIN7980 | 2 |
| 4 | 9.853-065.0 | <i>Vite TCEI M12x40 UNI5931 12.9</i> | Screw M12x40 UNI5931 12.9 | 2 |
| | 1.904-899.0 | POMPA MXT 100L 150BAR 1450RPM HY DX + MOT GHM3A-110 | POMPA MXT 100L 150BAR 1450RPM HY DX + MOT GHM3A-110 | |
| 1 | 1.904-787.0 | <i>Pompa MXT 100L 150BAR 1450RPM HY DX</i> | Pump MXT 100L 150BAR 1450RPM HY RIGHT | 1 |
| 2 | 9.853-811.0 | <i>Motore idraulico GHM3A-110</i> | Hydraulic motor GHM3A-110 | 1 |
| 3 | 9.851-159.0 | <i>Rosetta elastica M12 DIN7980</i> | Washer M12 DIN7980 | 2 |
| 4 | 9.853-065.0 | <i>Vite TCEI M12x40 UNI5931 12.9</i> | Screw M12x40 UNI5931 12.9 | 2 |

TECHNICAL SPECIFICATIONS

SPECIFICHE TECNICHE

| MODEL Modello | PART.NO. Codice | PUMP - POMPA | | | | | | | HYDRAULIC MOTOR - MOTORE IDRAULICO | | | | | | Weight Peso Kg |
|--------------------|--------------------|----------------------|-----------|--------------------------------------|------|------------------------|---------------------------------|------|------------------------------------|-------------------------------|-------|--|------|------|----------------------|
| | | Flow Rate Portata | | Max Pressure Pressione Massima | | RPM Giri/ Minuto | Max Power Potenza massima | | Displacement Cilindrata | Oil Flow Rate Portata Oilo | | Max Oil Pressure Pressione Massima Oilo | | | |
| | | l/min | US GPM | Bar | Psi | | HP | kW | | cm³ rev | l/min | US GPM | Bar | Psi | |
| MXT HY 70L 200BAR | 1.904-900.0 | 70.0 | 18.5 | 200 | 2900 | 1450 | 35.9 | 26.4 | 71.0 | 97.6 | 25.8 | 164 | 2378 | 42.7 | |
| MXT HY 100L 150BAR | 1.904-899.0 | 100.0 | 25.9 | 150 | 2175 | | 37.7 | 27.7 | 71.0 | 97.6 | 25.8 | 172 | 2495 | | |