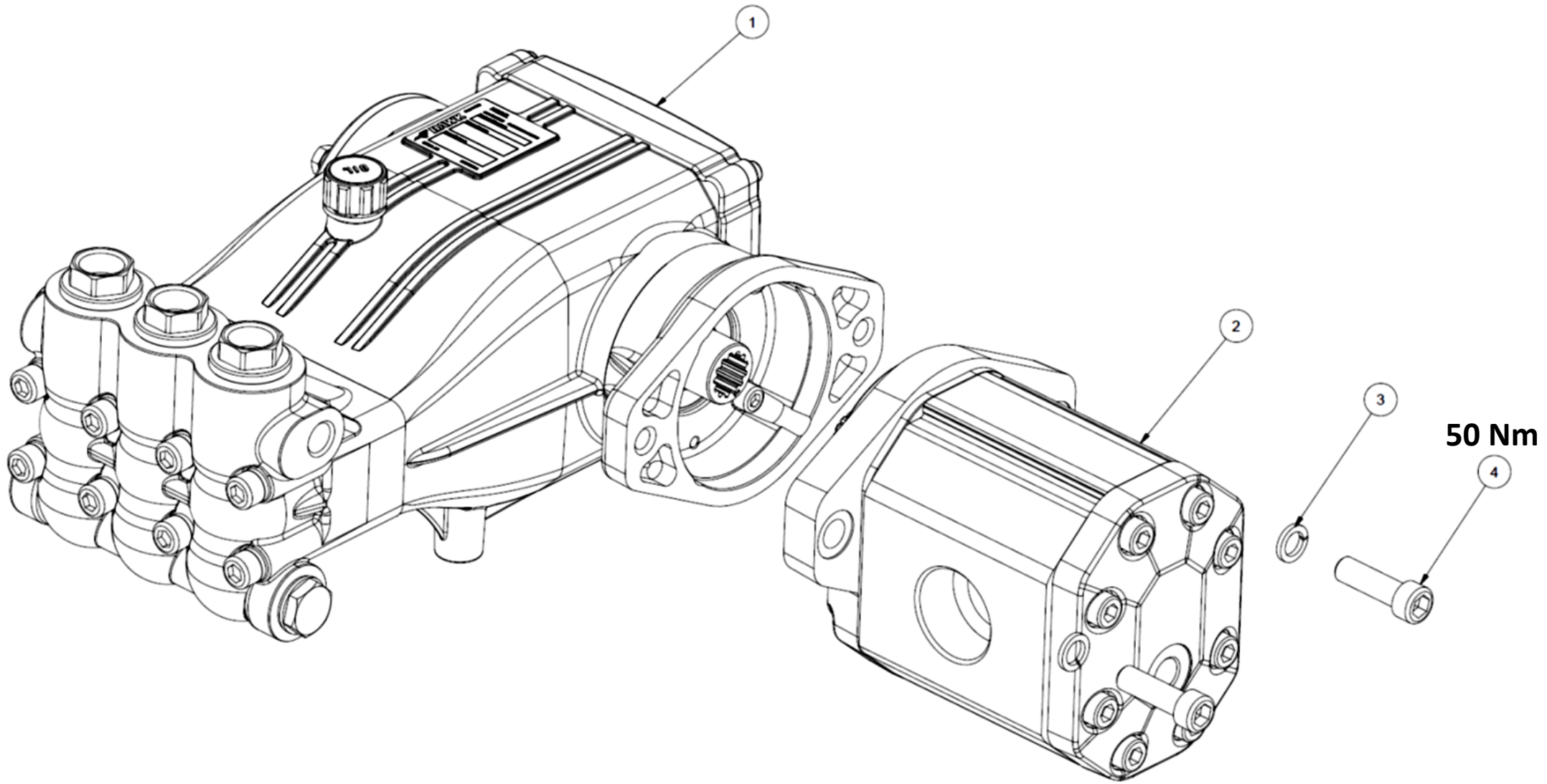


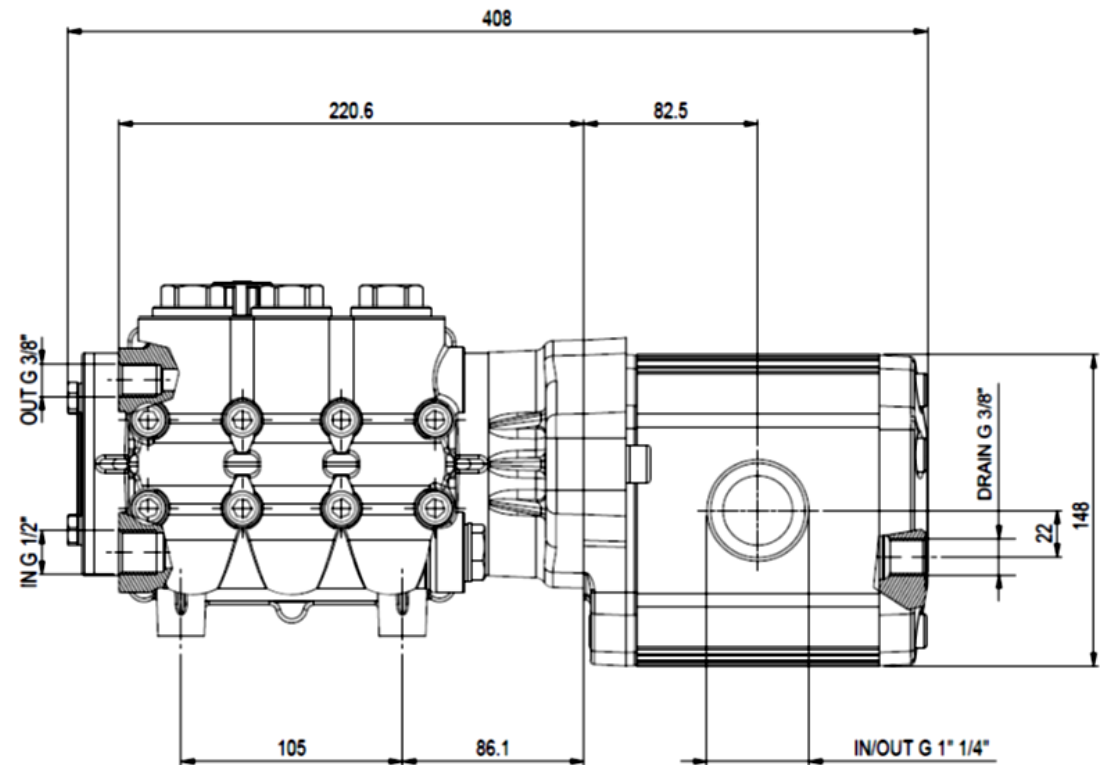
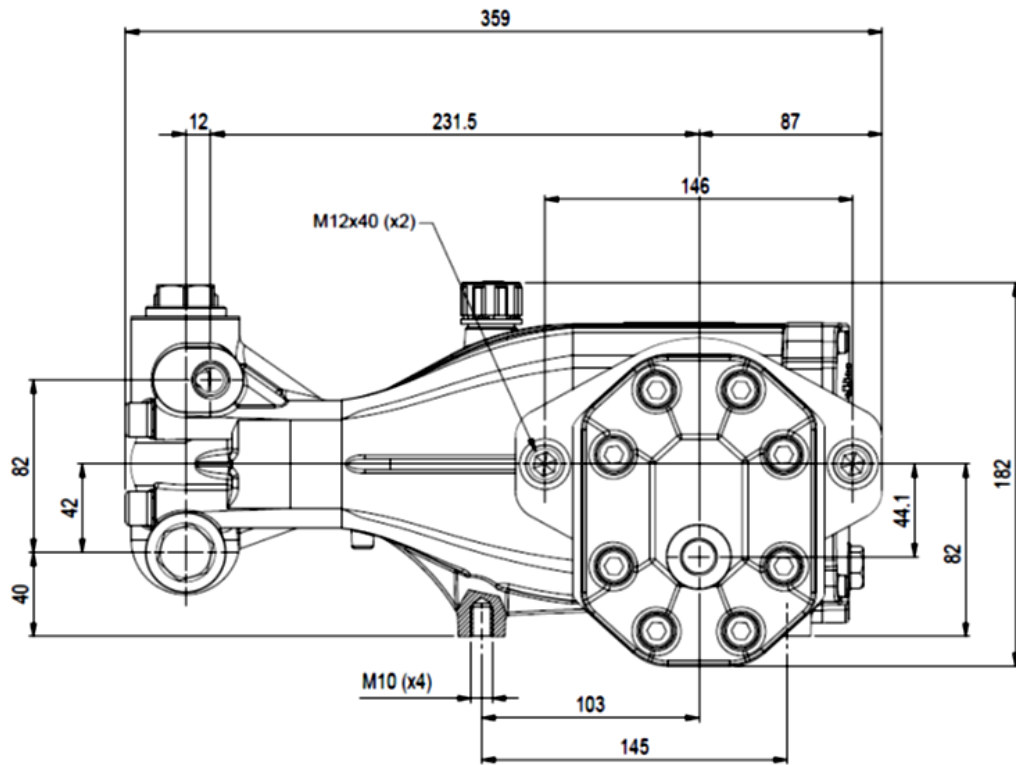
HYDRAULIC MOTORPUMP / MOTOPOMPA IDRAULICA PX



PART LIST**LISTA PARTI**

<i>Pos.Item</i>	<i>Codice</i> Part Number	<i>Descrizione</i>	Description	<i>Q.tà</i> Q.ty
	1.904-895.0	<i>POMPA PX HY 21L 500BAR 1450RPM DX</i> + <i>MOT.GHM3A-80</i>	PUMP XLT HY 21L 500BAR 1450RPM DX + MOT.GHM3A-80	
1	1.904-778.0	<i>Pompa PX HY 21L 500BAR 1450RPM</i>	Pump PX HY 21L 500BAR 1450RPM	1
2	9.853-809.0	<i>Motore idraulico GHM3A-80</i>	<i>Hydraulic motor GHM3A-80</i>	1
3	9.851-159.0	<i>Rosetta elastica M12 DIN7980</i>	<i>Washer M12 DIN7980</i>	2
4	9.853-065.0	<i>Vite TCEI M12x40 UNI5931 12.9</i>	<i>Screw M12x40 UNI5931 12.9</i>	2

OVERALL DIMENSIONS - DIMENSIONI DI INGOMBRO



TECHNICAL SPECIFICATIONS

SPECIFICHE TECNICHE

MODEL Modello	PART.NO. Codice	PUMP - POMPA							HYDRAULIC MOTOR - MOTORE IDRAULICO					Weight Peso
		Flow Rate Portata		Max Pressure Pressione Massima		RPM Giri/ Minuto	Max Power Potenza massima		Displacement Cilindrata	Oil Flow Rate Portata Oilo		Max Oil Pressure Pressione Massima Oilo		
		l/min	US GPM	Bar	Psi		HP	kW		cm ³ rev	l/min	US GPM	Bar	
PX HY 21L 500BAR	1.904-895.0	21.0	5.7	500	7250	1450	27.6	20.3	52	71.5	18.9	186	2697.7	---