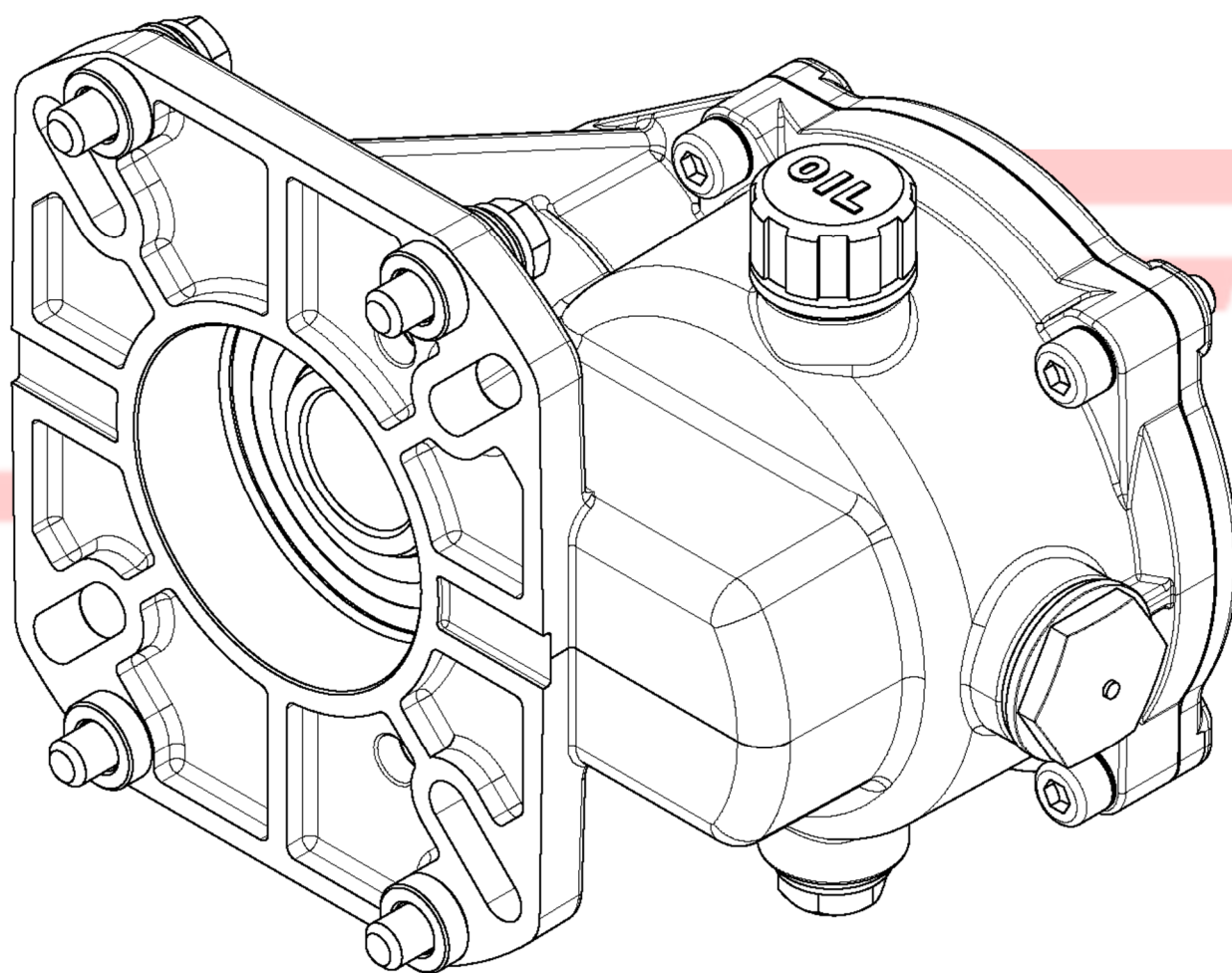


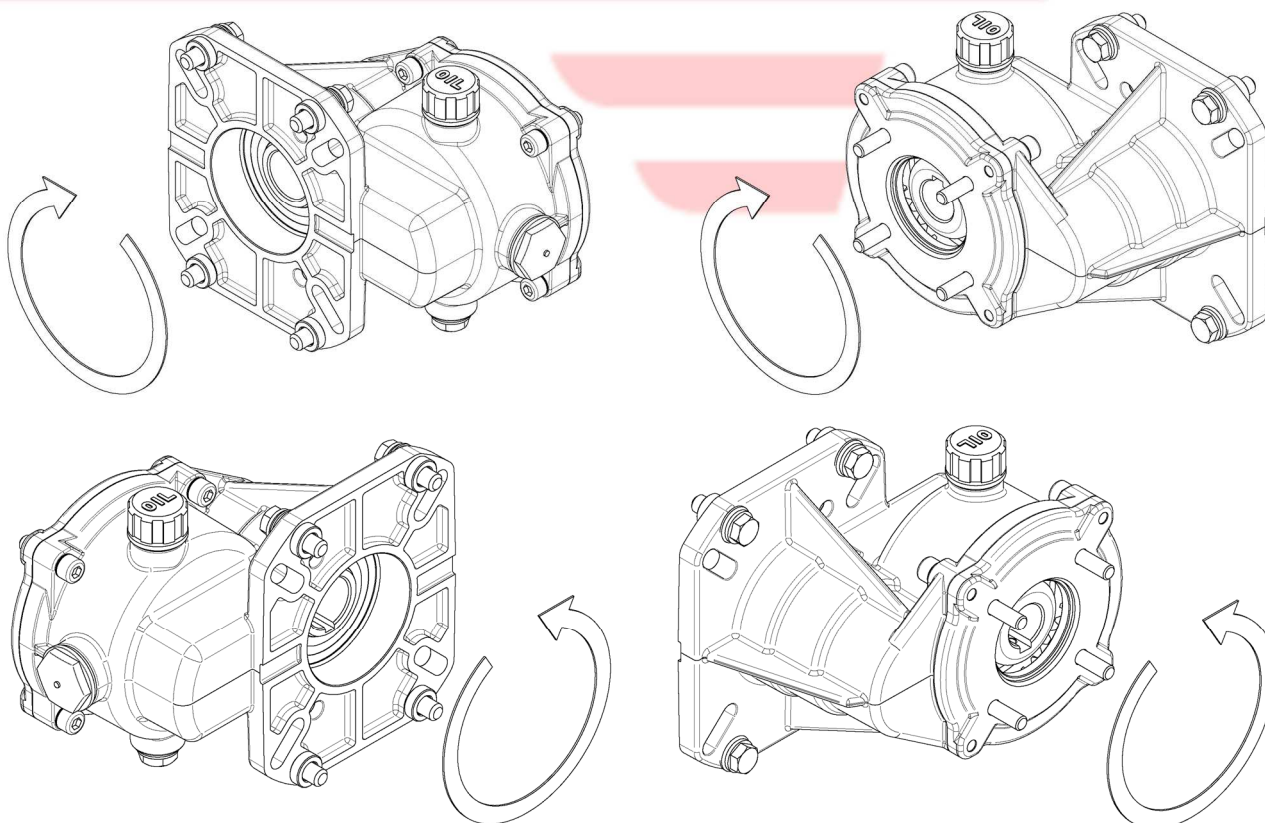
RIDUTTORI PER MOTORI A SCOPPIO 13-17,7-23 kW
GEARBOX FOR PETROL ENGINES 13-17.7-23 kW
1.904-903.0 – 1.904-904.0 – 1.904-905.0 – 1.904-906.0



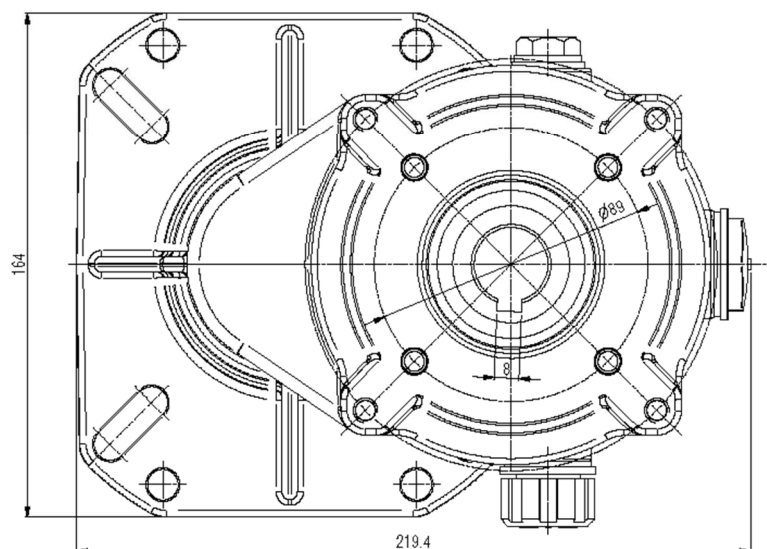
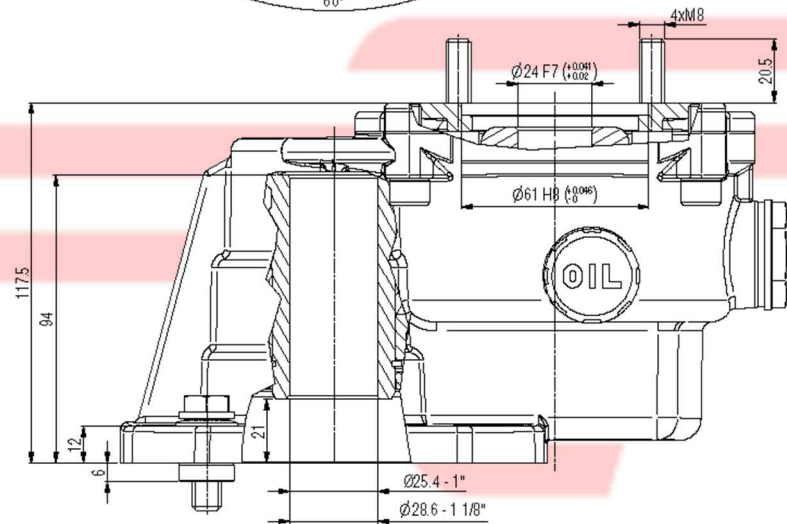
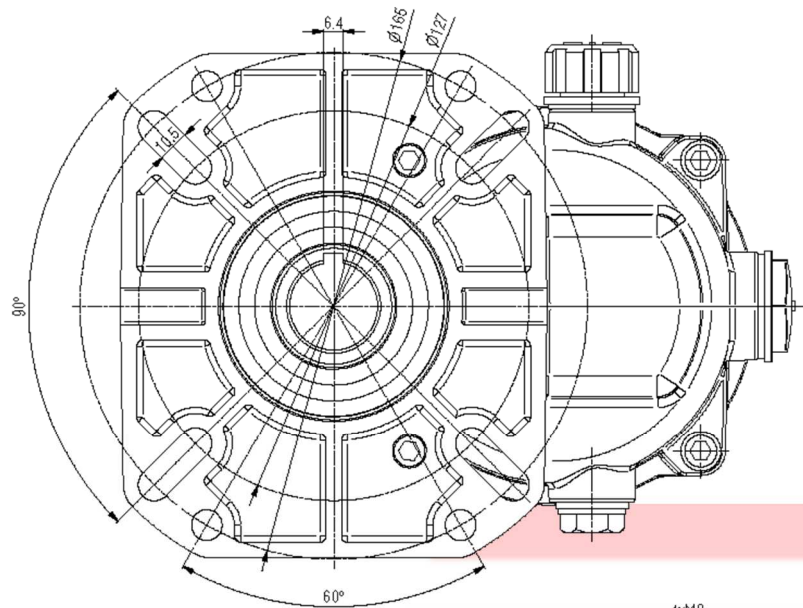
CARATTERISTICHE TECNICHE / SPECIFICATIONS

| Codice Riduttore <i>Part Number</i> | 1.904-906.0 | 1.904-905.0 | 1.904-904.0 | 1.904-903.0 |
|---|---------------------------|----------------------|----------------------|------------------|
| Potenza max motore <i>Max Engine Power</i> | 13 kW (17.7 HP) | 17,7 kW (24 HP) | 17,7 kW (24 HP) | 23 kW (31 HP) |
| Albero Motore <i>Engine Shaft</i> | 25,4 mm (1") | 25,4 mm (1") | 28,6 mm (1 1/8") | 28,6 mm (1 1/8") |
| Per Pompe Serie <i>For Pump Series</i> | NMT-NPM | NLTI-XLTI PXI-XXT | NLTI-XLTI PXI-XXT | PXI-XXT |
| Flangia Motore <i>Motor flange</i> | SAE J609b | | | |
| Albero Pompa <i>Pump Shaft</i> | 24 mm | | | |
| Rapporto di riduzione <i>Gear Ratio</i> | 2,176:1 (3150 / 1450 rpm) | | | |
| Olio Tipo <i>Lubrication Oil</i> | SAE 90 | | | |
| Capacità Olio <i>Oil Capacity</i> | 0,33 l (11 Oz.) | | | |
| Peso <i>Weight</i> | 4 kg (1,82 lb) | | | |

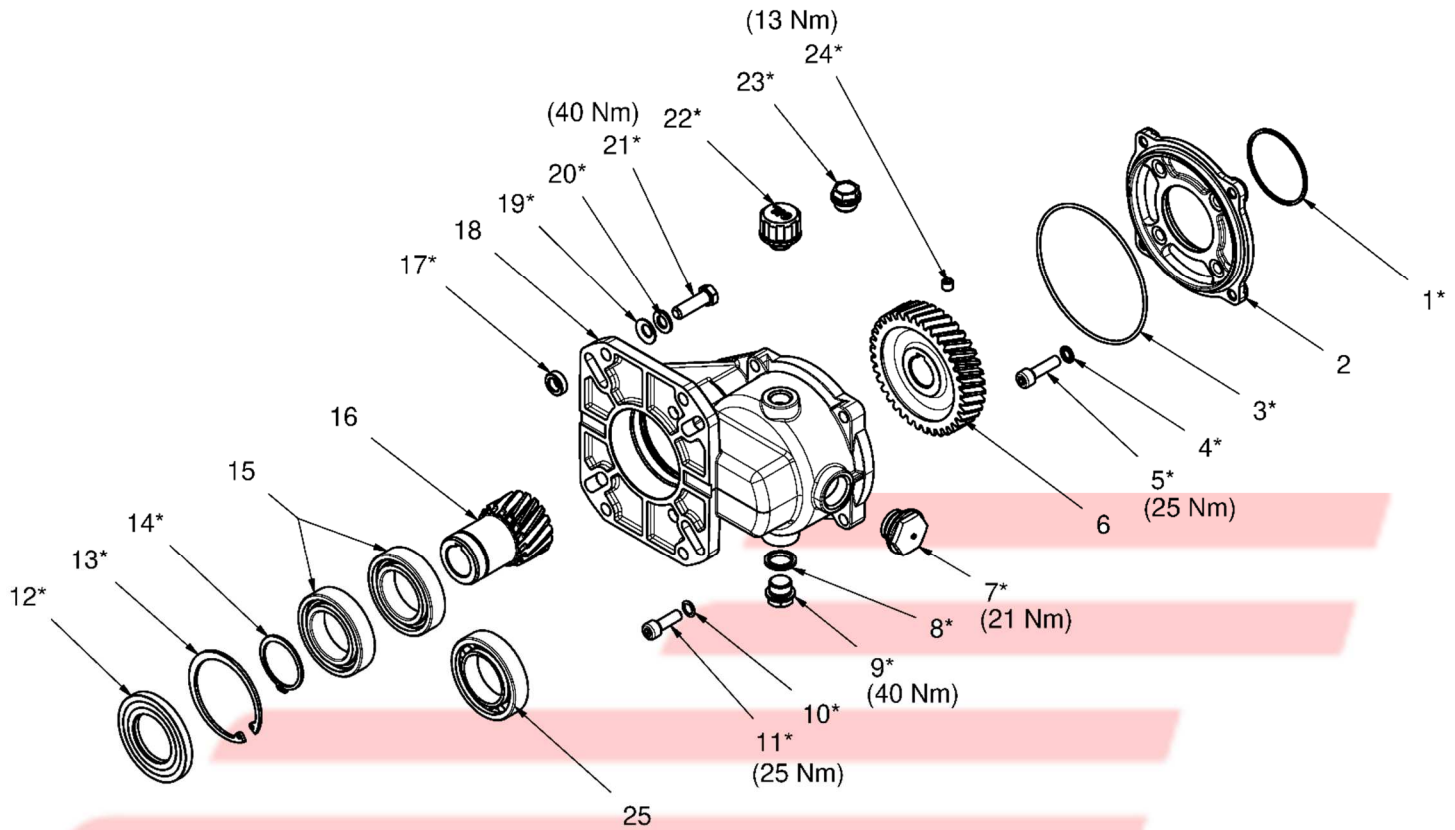
ROTAZIONE / ROTATION



INGOMBRI / OVERALL DIMENSION



ESPLOSO / EXPLODED VIEW



MAINTENANCE KIT / KIT MANUTENZIONE

| KIT | Item - Pos | Part Number - Codice | Description | Descrizione | Q.TY by gearbox - Q.TÀ per riduttore | 1.904-903.0 | 1.904-904.0 | 1.904-905.0 | 1.904-906.0 |
|-----|---|-------------------------------|-------------------------|-----------------------|--|-------------|-------------|-------------|-------------|
| A | 1- 3- 4- 5- 7- 8- 9- 10 11- 12- 13- 14- 17- 19 20- 21- 22- 23- 24 | 1.905-008.0 | GEARBOX SPARE PARTS KIT | KIT RICAMBI RIDUTTORE | 1 | • | • | • | • |

“Q.TY bt gearbox” => Necessary quantity to repair one gearbox
 “Q.TA’ per riduttore” => Quantità necessaria per riparare un riduttore

LISTA PARTI / PARTS LIST

| Pos. | Codice Part Number | Descrizione | Description | Kit | Q.tà Q.ty | 1.904-903.0 | 1.904-904.0 | 1.904-905.0 | 1.904-906.0 |
|------|--------------------|--------------------------------------|---------------------------------------|-----|-----------|-------------|-------------|-------------|-------------|
| 1* | | O-RING 3225 - Ø2,62x56,82 NBR 70 | O-RING 3225 - Ø2.62x56.82 NBR 70 | A | 1 | • | • | • | • |
| 2 | 9.853-477.0 | FLANGIA RIDUTTORE XLTI-PXI-XXT | GEARBOX FLANGE XLTI-PXI-XXT | | 1 | • | • | • | |
| | 9.853-847.0 | FLANGIA RIDUTTORE NMT-NPM | GEARBOX FLANGE NMT-NPM | | 1 | | | | • |
| 3* | | O-RING 3450 - Ø2,62x113,97 NBR 70 | O-RING 3450 - Ø2.62x113.97 NBR 70 | A | 1 | | | | |
| 4* | | BONDED SEAL M8 | BONDED SEAL M8 | A | 4 | | | | |
| 5* | | VITE TCEI M8x30 UNI5931 12.9 GEOMET | STUD BOLT M8x30 GEOMET | A | 4 | | | | |
| 6 | 9.853-896.0 | CORONA Z=37-20° Ø24 | RING GEAR Z=37-20° DIA. 24 mm | | 1 | | | | |
| 7* | | SPIA LIVELLO OLIO G 3/4 | OIL SIGHT GLASS G 3/4 | A | 1 | | | | |
| 8* | | BONDED SEAL G 3/8 AUTOCENTRANTE | BONDED SEAL G 3/8 | A | 1 | • | • | • | • |
| 9* | | TAPPO OTTONE G 3/8 | DRAINAGE PLUG G 3/8 | A | 1 | | | | |
| 10* | | ROSETTA SCHNORR 08 | SPRING WASHER 08 | A | 4 | | | | |
| 11* | | VITE TCEI M8x25 UNI5931 8.8 ZINCATA | STUD BOLT M8x25 ZINC PLATED | A | 4 | | | | |
| 12* | | ANELLO RADIALE Ø40x72x7 TIPO A (NBR) | PINION OIL SEAL DIA. 40x72x7 | A | 1 | | | | |
| 13* | | SEEGER FORO Ø72 UNI 7437 | SNAP RING DIA. 72 mm | A | 1 | | | | |
| 14* | | SEEGER ALBERO Ø40 UNI 7435 | SNAP RING DIA. 40 mm | A | 1 | | | | |
| 15 | 9.853-902.0 | CUSCINETTO A SFERE 6008 40x68x15 | BALL BEARING 6008 DIA. 40x68x15 | | → 1 | 1 | 2 | 2 | 2 |
| 16 | 1.904-901.0 | PIGNONE COMPLETO Ø1 1/8" | COMPLETE PINION DIA. 1 1/8" | | 1 | • | • | | |
| | 1.904-902.0 | PIGNONE COMPLETO Ø1" | COMPLETE PINION DIA. 1" | | 1 | | | • | • |
| 17* | | DISTANZIALE RIDUTTORE | SPACER | A | 4 | | | | |
| 18 | 9.853-892.0 | CARTER RIDUTTORI 13-17,7-23 kW | GEARBOX CRANKCASE 13-17.7-23 kW | | 1 | | | | |
| 19* | | ROSETTA EL.Ø10 SCHNORR | SPRING WASHER DIA. 10 mm | A | 4 | | | | |
| 20* | | ROSETTA FE Ø10x18x2 UNI1750 | WASHER DIA. 10x18x2 mm | A | 4 | | | | |
| 21* | | VITE TE ANSI B 18.2.1 3/8x1"1/4 UNC | HEX SCREW ANSI B 18.2.1 3/8x1"1/4 UNC | A | 4 | • | • | • | • |
| 22* | | TAPPO SFIATO OLIO G3/8 SPF 30-3/8+F | OIL PLUG G 3/8 SPF 30-3/8+F | A | 1 | | | | |
| 23* | | TAPPO CHIUSURA CARTER G3/8 TCN/38 | CRANKCASE PLUG | A | 1 | | | | |
| 24* | | VITE STEI M8x8 UNI5923 | GRUB SCREW M8x8 | A | 1 | | | | |
| 25 | 9.853-903.0 | CUSCINETTO RULLI CILINDRICI NJ1008 | ROLLER BEARING NJ1008 | | 1 | • | | | |

IMPORTANT

IMPORTANTE

* **Part available ONLY in kit**
Disponibile SOLO in kit